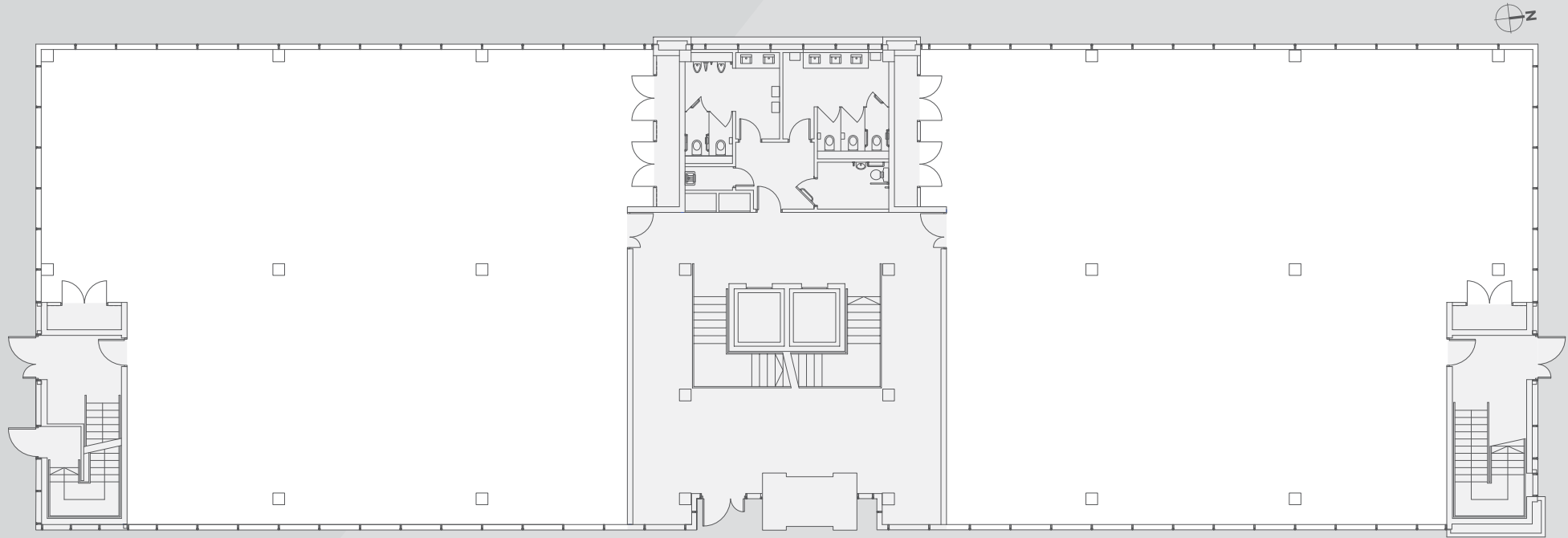


Ground Floor

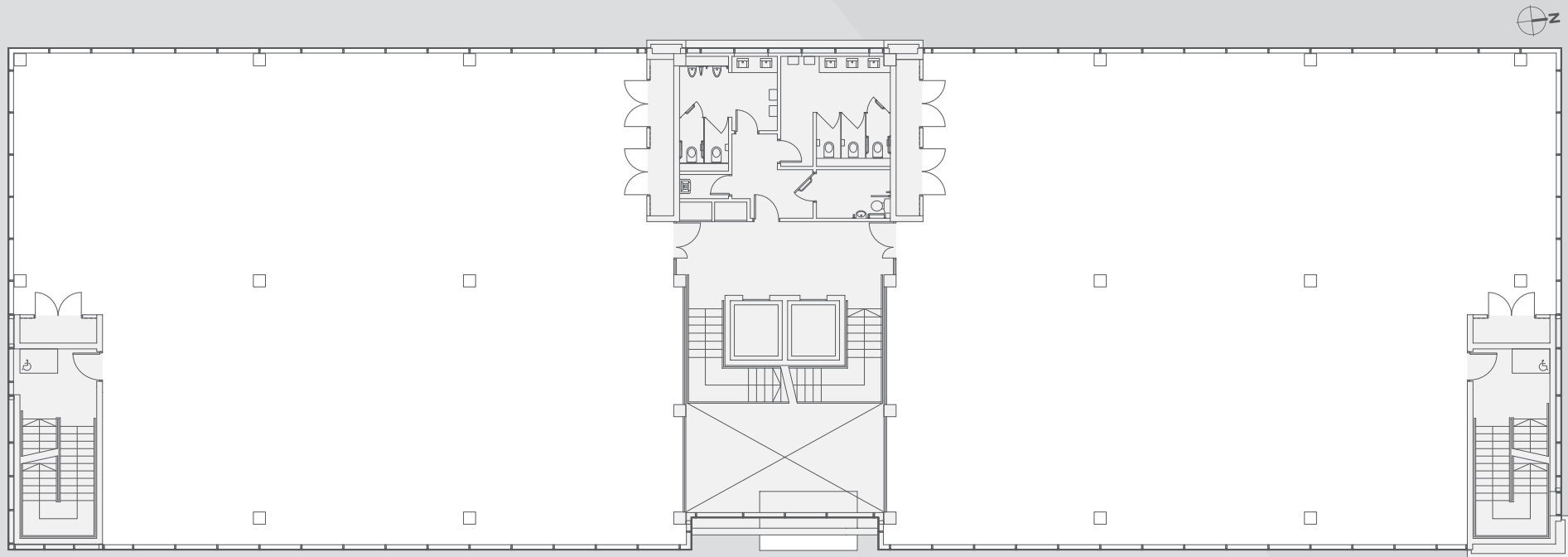


Not to scale. Indicative purposes only.

Accommodation Schedule

(GIAs)	Sq.M	Sq.Ft
Ground Floor	1,032	11,108
First Floor	996	10,721
Second Floor	1,133	12,196
Third Floor	1,133	12,196
Fourth Floor	1,133	12,196
Total	5,427	58,417
Basement	1,707	18,374

First Floor

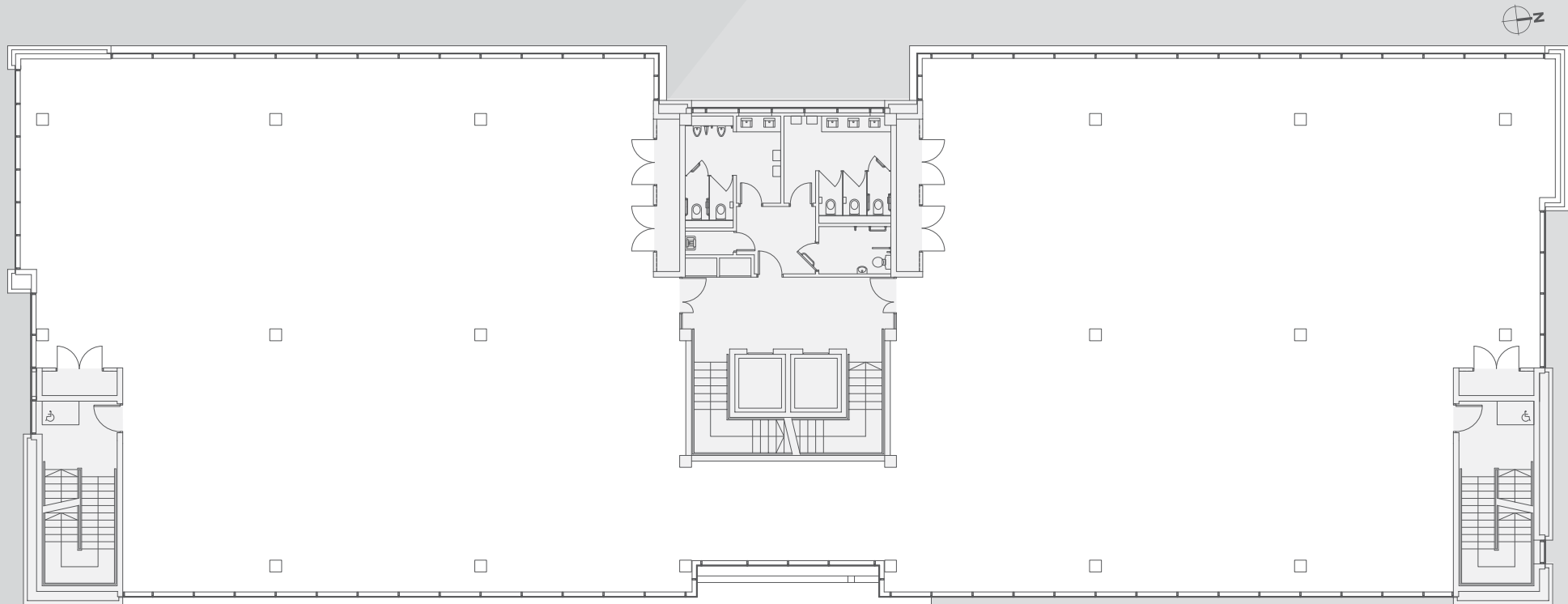


Not to scale. Indicative purposes only.

Accommodation Schedule

(GIAs)	Sq.M	Sq.Ft
Ground Floor	1,032	11,108
First Floor	996	10,721
Second Floor	1,133	12,196
Third Floor	1,133	12,196
Fourth Floor	1,133	12,196
Total	5,427	58,417
Basement	1,707	18,374

Second, Third & Fourth Floors

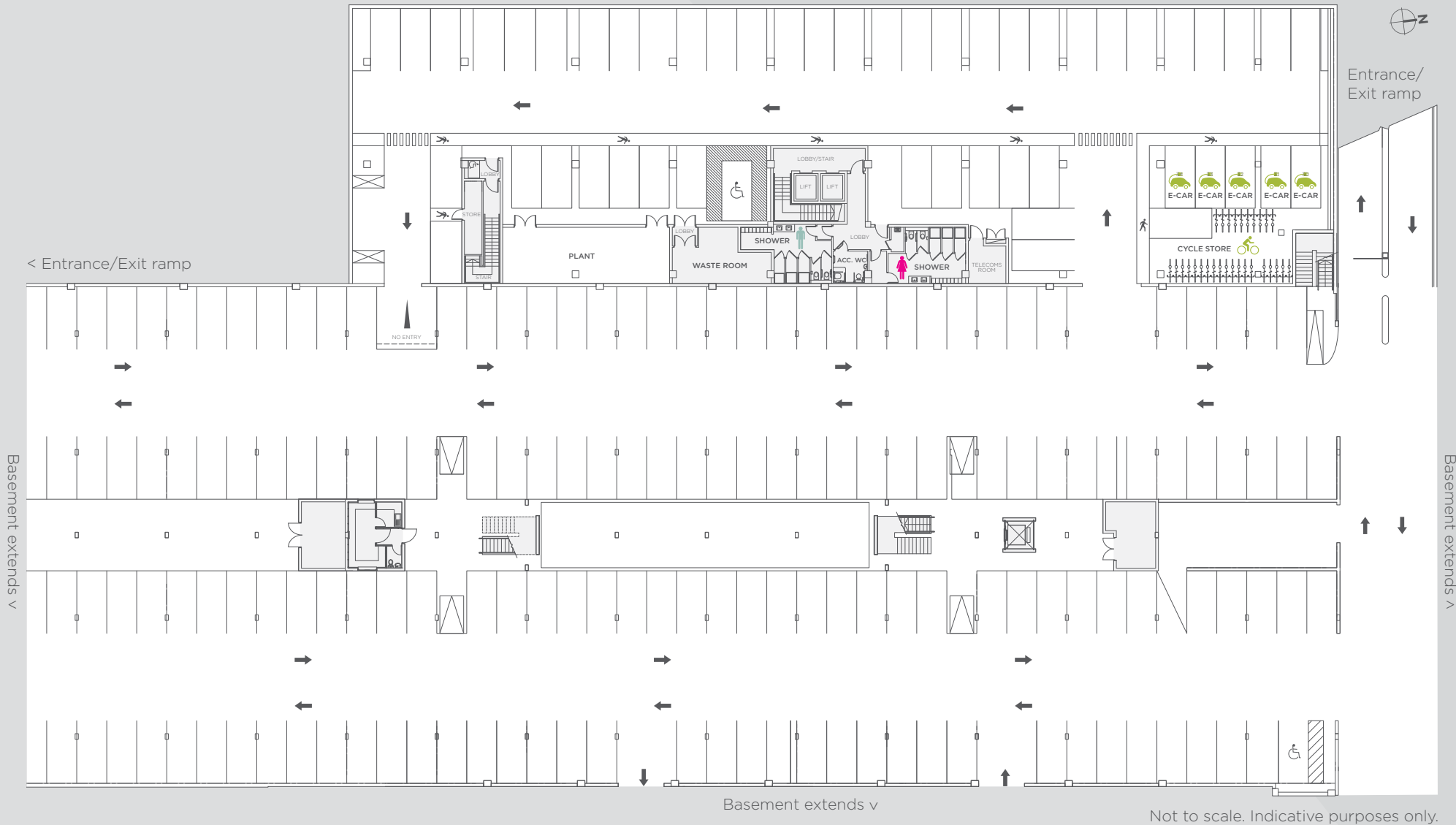


Not to scale. Indicative purposes only.

Accommodation Schedule

(GIAs)	Sq.M	Sq.Ft
Ground Floor	1,032	11,108
First Floor	996	10,721
Second Floor	1,133	12,196
Third Floor	1,133	12,196
Fourth Floor	1,133	12,196
Total	5,427	58,417
Basement	1,707	18,374

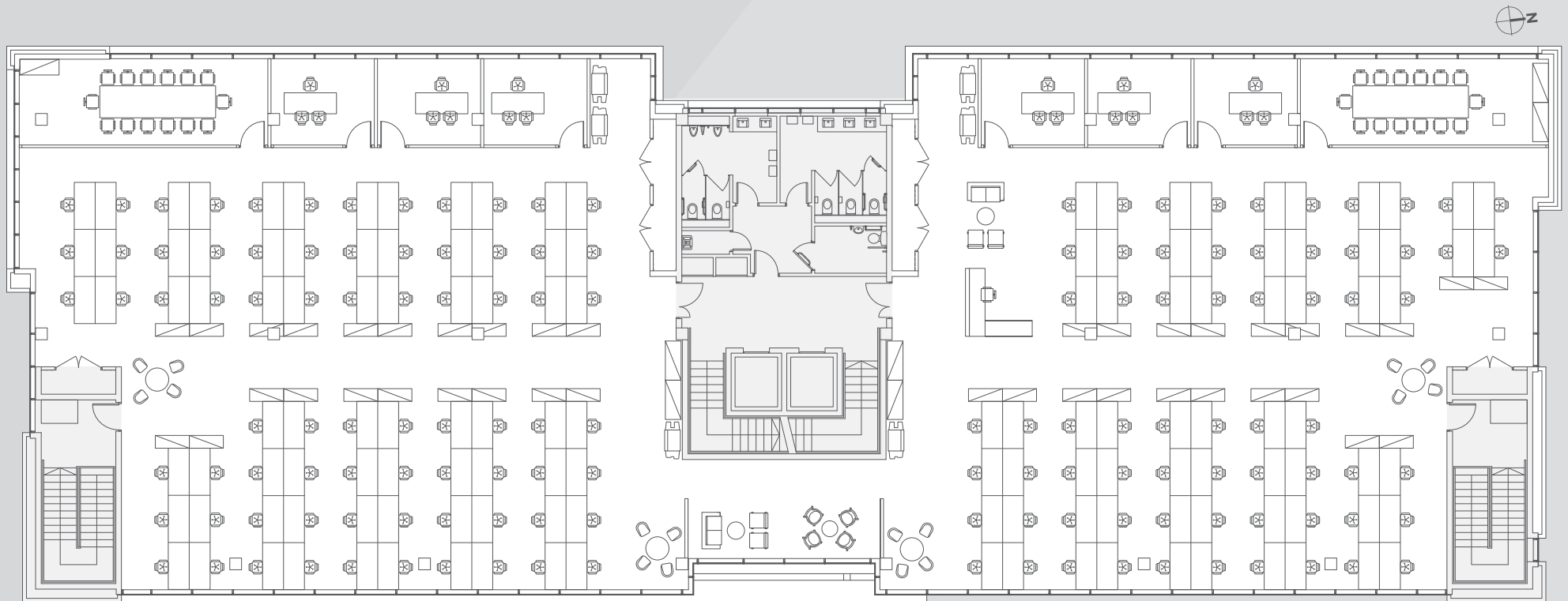
Basement



Infrastructure 1,707 Sq.M / 18,374 Sq.Ft (GIAs)

85 x	Car park spaces	
29 x	Cycle bays	
5 x	Designated e-car bays	
2 x	Male & female changing & shower facilities	

Potential Layout 1 For Professional Services



Not to scale. Indicative purposes only.

Infrastructure 1 Person per 6.9 Sq.M

140 x Workstations

2 x Boardrooms

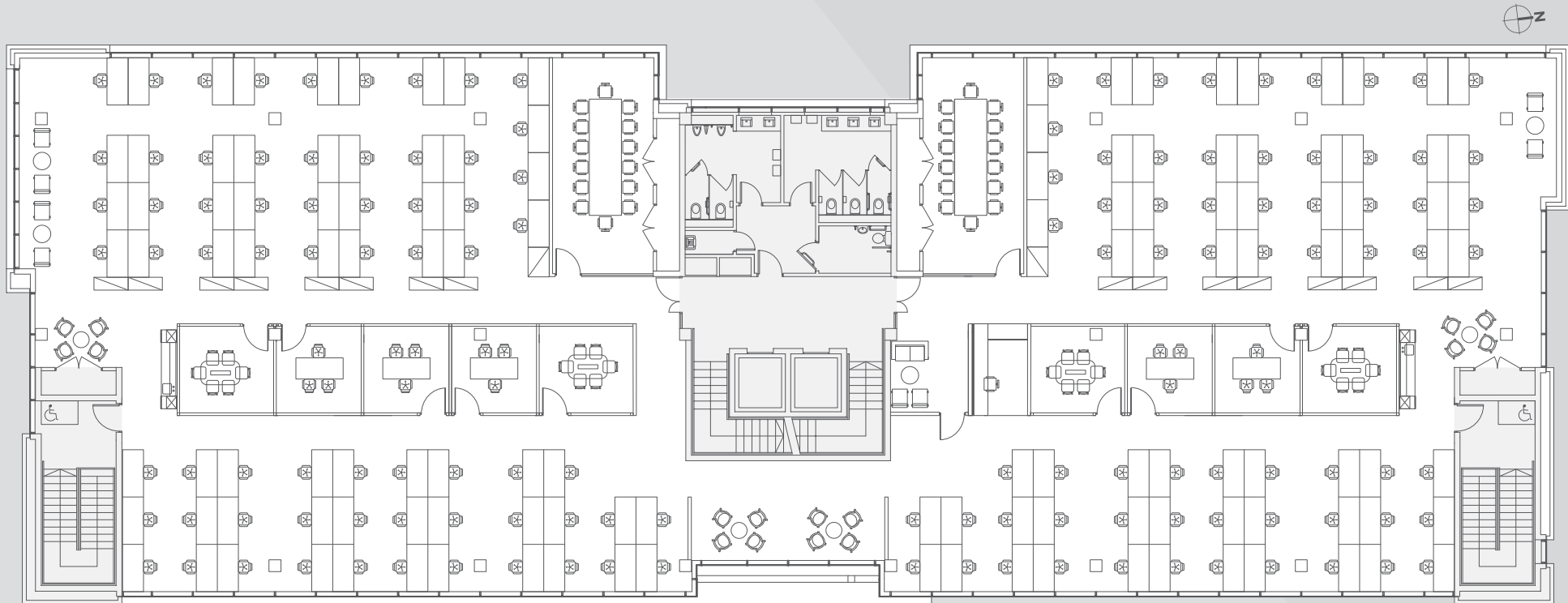
1 x Breakout space

6 x Offices

4 x Copy areas

1 x Reception area

Potential Layout 2 For Technology Services



Not to scale. Indicative purposes only.

Infrastructure 1 Person per 7.1 Sq.M

134 x Workstations

4 x Meeting rooms

3 x Breakout spaces

5 x Offices

2 x Coffee stations

1 x Reception area

2 x Boardrooms